



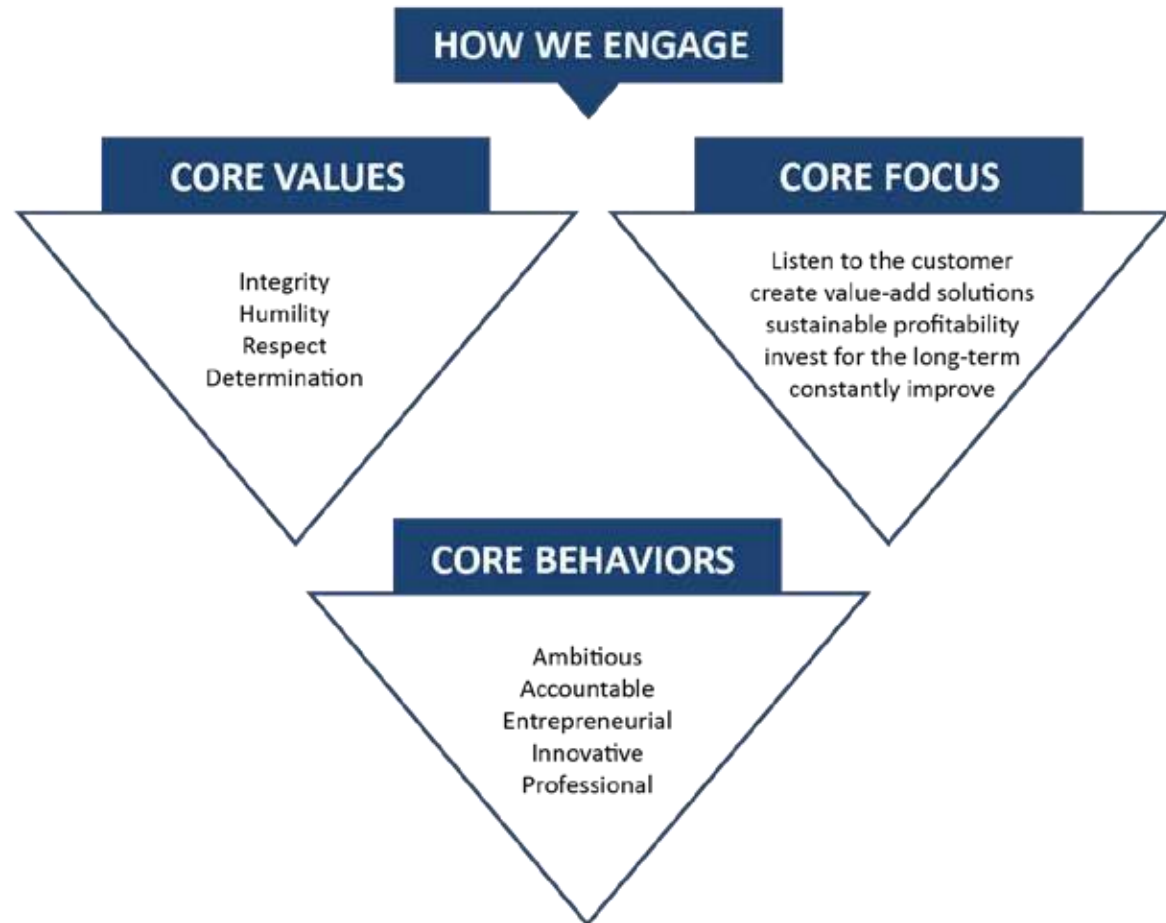
# **IPG CONTRACTING PROFILE**



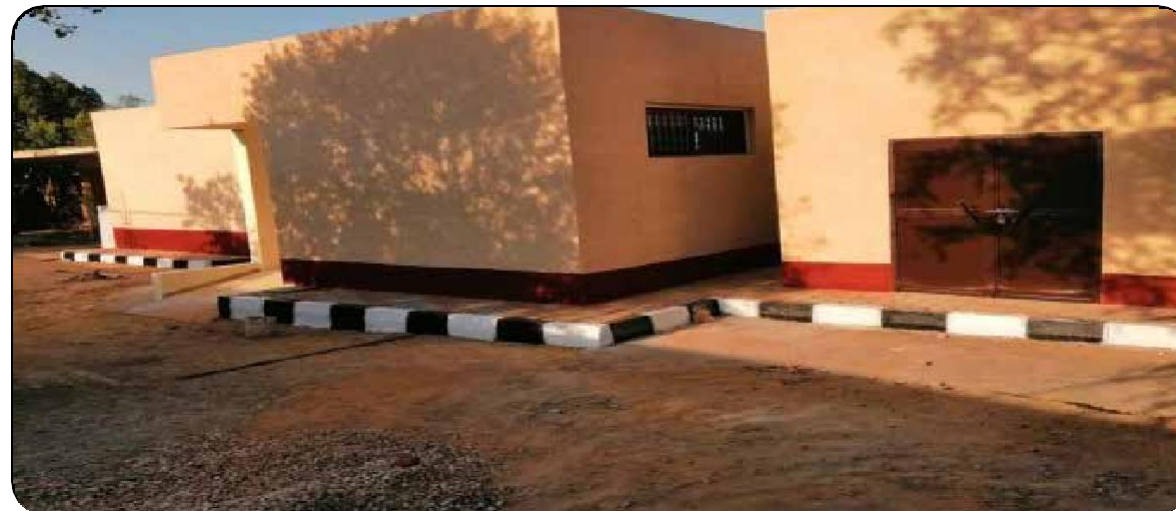
## WHO WE ARE



Was established as an Egyptian limited liability company in 2015 AD in the Arab Republic of Egypt, where the company has completed many development projects and we have specialized in the maintenance of infrastructure and superstructure, represented in building maintenance projects and constructions



We provide Supply, installation, testing, delivery and maintenance of all construction, architectural, and all types of public and private buildings such as commercial and industrial projects .





## Some of our Services

Demolition and Excavation

Electrical and Lighting Works

Sidewalks and Footpaths



## Demolition and Excavation

Demolition and excavation works, including demolition and removal of buildings, excavation and transfer of foundations and infrastructure.



## Electrical and Lighting Works

Construction and maintenance of electrical and lighting works, including electrical extensions, and installation of stations and lighting poles.



## Sidewalks and Footpaths

Construction and maintenance of sidewalks and footpaths.





## Sidewalks and Footpaths

Completion of some of the sidewalks and footpaths



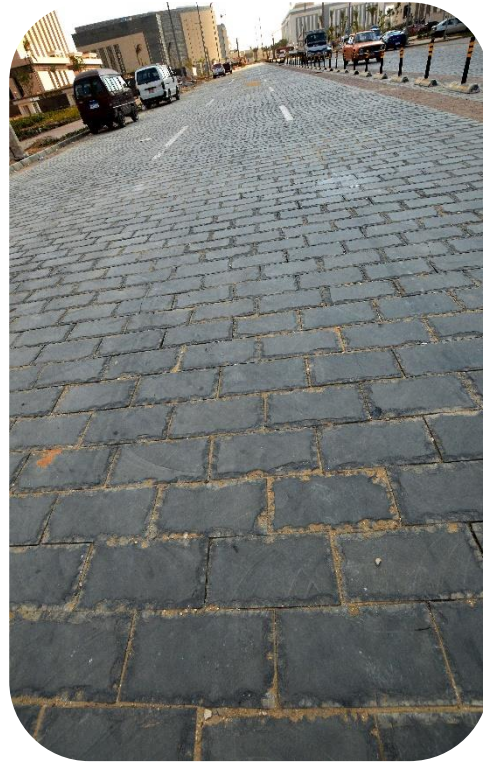
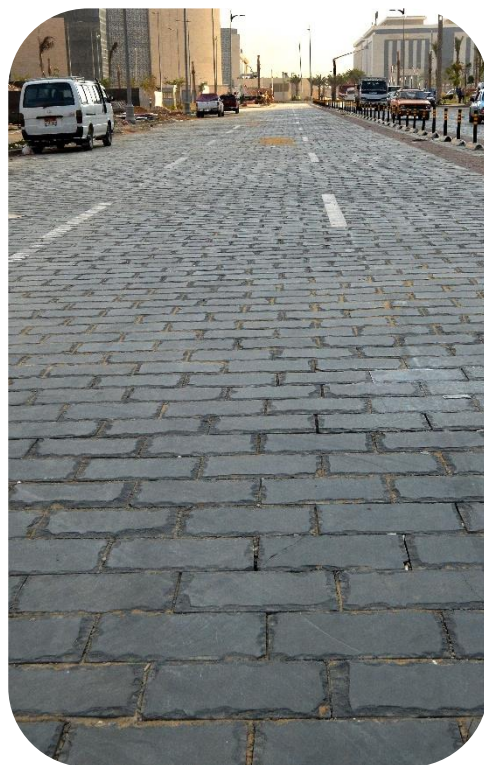
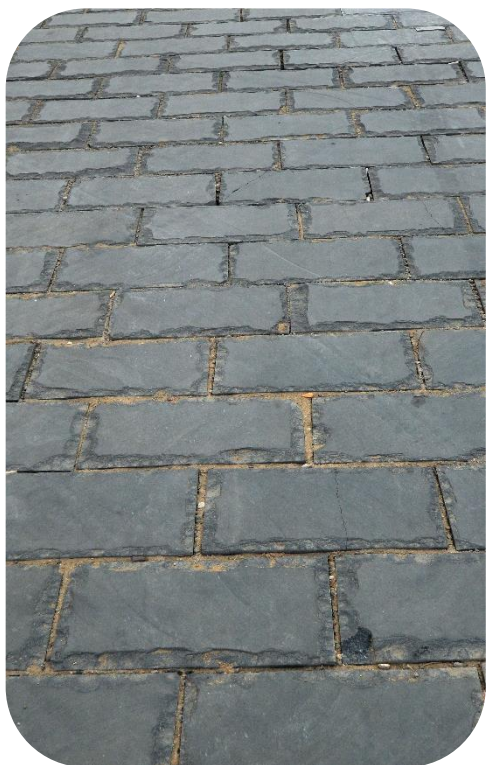
## Some of our achievements

### ACUD Basalt- Before



## Some of our achievements

### ACUD Basalt- After



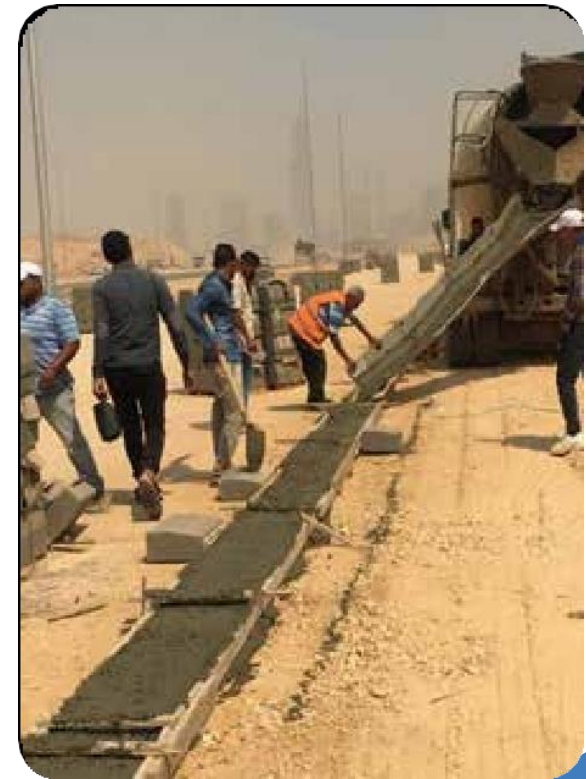
## Some of our achievements

ACUD Basalt- After



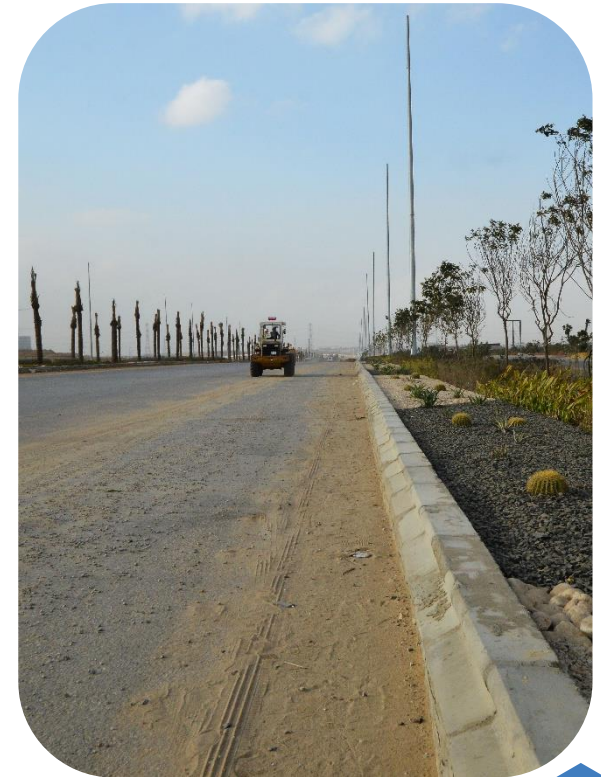
## Some of our achievements

### Elsewedy Landscape Project- Before



## Some of our achievements

### Elsewedy Landscape Project- After



## Some of our achievements

LRT (Orascom/TSO) Basalt Delivery to the LRT tracks



## Some of our achievements

### **Contracted by Rozeta Milk**

Building plot No. 421, 422 and 423 in October Gardens within the project of the Investors Association in the Sixth of October, allocated by Ministerial Resolution No. 375 of 2009 -with an area of (600 square meters) for each plot according to the dimensions and drawings approved for construction in terms of (foundations, basement, ground and five floors Repetitive containing 24 semi-finished units, roof rooms and a fence around the building) .



## Some of our achievements

### **Contracted By Mr. Essa Foad Ahmed Metwali**

Building plot No. 247, an area of 209 m, on Al-Wahat Road, October City, Lottery 2016. Regular and reinforced concrete works. The entire residence is basement, ground and three floors. Materials and workmanship according to the engineering requirements, all ceilings are executed on two layers of iron 10 meters and width



## Some of our achievements

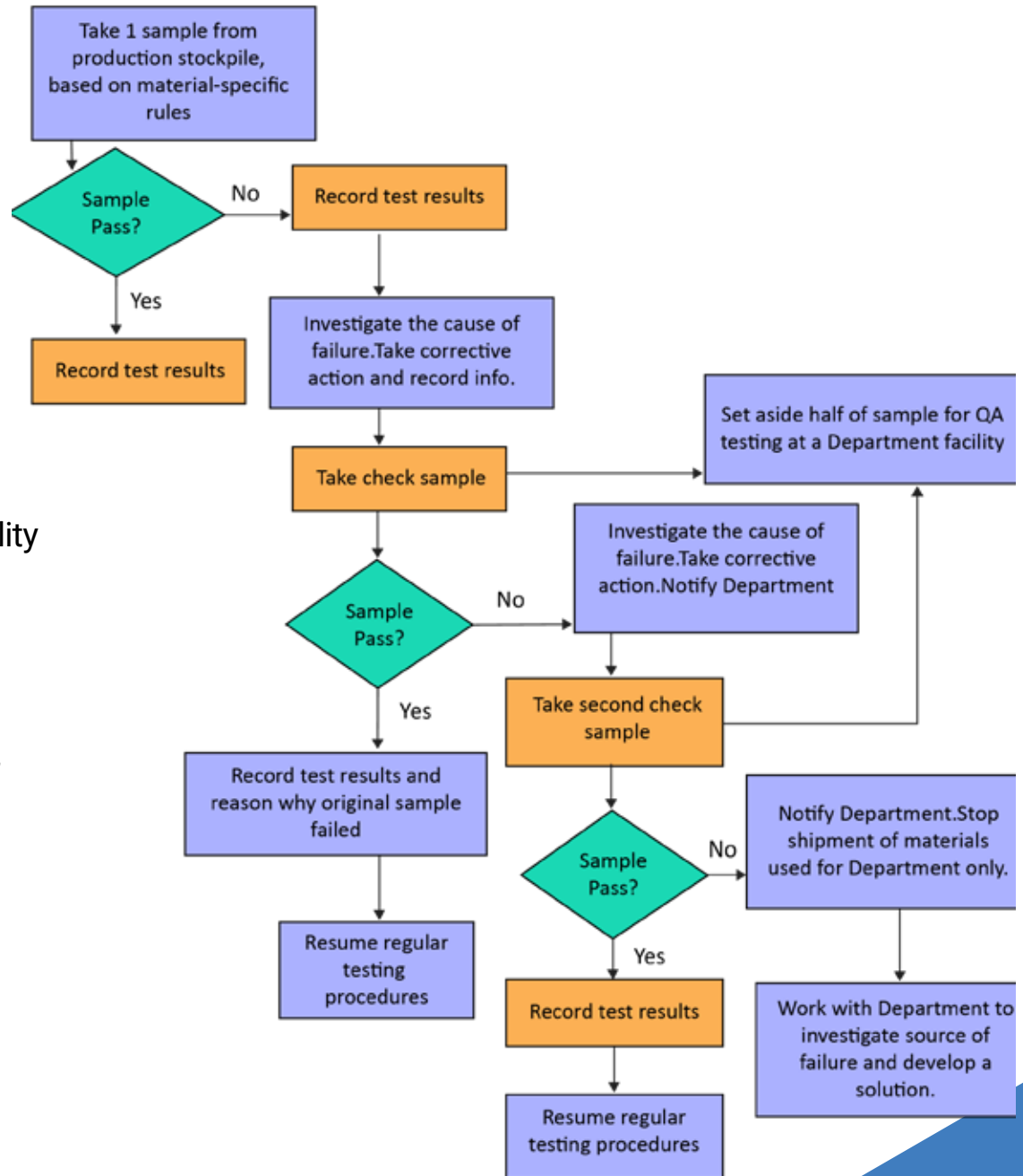
**Contracted by Mr. Raafat Al-Saed Metwali**  
Plot No. 312, an area of 209 m, on Al-Wahat Road,  
October City, 2016. Reinforced concrete works as  
necessary for the bases of Plot 209 m



## QUALITY CONTROL PLAN

■ IPG uses a comprehensive Quality Control system to ensure that compulsory quality tests are carried out at all stages of the production from quarry development to end product i.e. aggregates of different sizes.

■ IPG has the resources and technology to match with any quarry product specification of International standards, ensuring our products comply to meet client's specific requirements.



## QUALITY CONTROL PLAN (Cont.)

### Testing Procedure

- All tests are recorded on standard reporting wheel supplied by the ENR & NAT Registered Laboratory detailing the location and type of material, full test report and signed by the authorized soil tester.



### Method of Measurement

- The Stockpiles on site will be measured by the Quarry Manager, who will calculate the height by the length by the width. This will only be an approximate measurement. The final being that of the weigh bridge and will be recorded on a printed ticket, a delivery docket and the daily record book.

- Each stockpile shall be uniquely identified with a sign board showing lot number and commencement/completion dates.

## QUALITY CONTROL PLAN (Cont.)

### Purpose and Scope

■ IPG shall carry out internal audits to verify compliance with contractual requirements and to evaluate the quality system's effectiveness.



### Responsibilities

■ The Quality Assurance Engineer shall be responsible for all product and process/ technical procedure audits

■ The Quality Assurance Engineer may employ the services of an external specialist consultant to carry out a product audit. The audit shall be presented to the client by the General Manager

## Health And Safety Operation Procedures

■ IPG has a duty to achieve the highest standards of health and safety within the organization and through its undertakings for its employees, non-employees and members of the public.

■ IPG recognizes and accepts that health and safety is an integral part of the day to day working of the organization and receives the same commitment as other managerial functions, According to the public policy of the company and according to Egyptian labor law.

■ Health and safety are values in which everyone will be involved and for which everyone is responsible.



## Safety Responsibilities

### ■ All managers are responsible for:

ensuring that the companies' health and safety policy is brought to the attention of the employees in their respective departments and that appropriate training is undertaken as directed from time to time.

### ■ All Supervisors are responsible for:

- Ensure control of work procedures are enforced, including PPE requirements
- Ensure that plant and equipment conforms to agreed standards
- Conduct regular inspections of work sites for unsafe conditions and general housekeeping
- Report, as appropriate, any unsafe conditions which cannot be immediately rectified
- Investigate and reporting of accidents
- Be aware of emergency response procedures and duties
- Promote and develop HSE awareness with the work force

### ■ All Employees have a responsibility to:

- Cooperate to achieve a healthy and safe workplace
- To take reasonable care of themselves and others
- Not interfere with anything provided to safeguard their health and safety
- Report all health and safety concerns to an appropriate person.

## Safety Responsibilities (Cont.)

Employees working on a customer's site should abide by the customer's health & safety policy. If in doubt always ask for clarification from their safety officer

**Safety equipment** and any safety devices provided should be used at all time Whenever an employee notices a health or safety problem or hazard which they are unable to put right, they must immediately advise the appropriate person named above

The company encourages managers and employees to monitor working conditions and systems of work, and report any aspect of the company's operation that is adversely Impacting on health and safety .







Tel : +20 (2) 25215072  
info@ipgtelecomeg.com  
14 street 274, New Madi, Cairo, Egypt